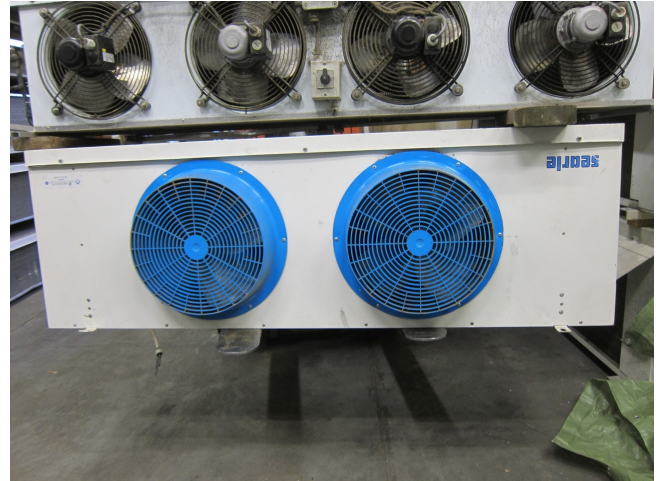


# Searle KM95-6 E

## Specifications

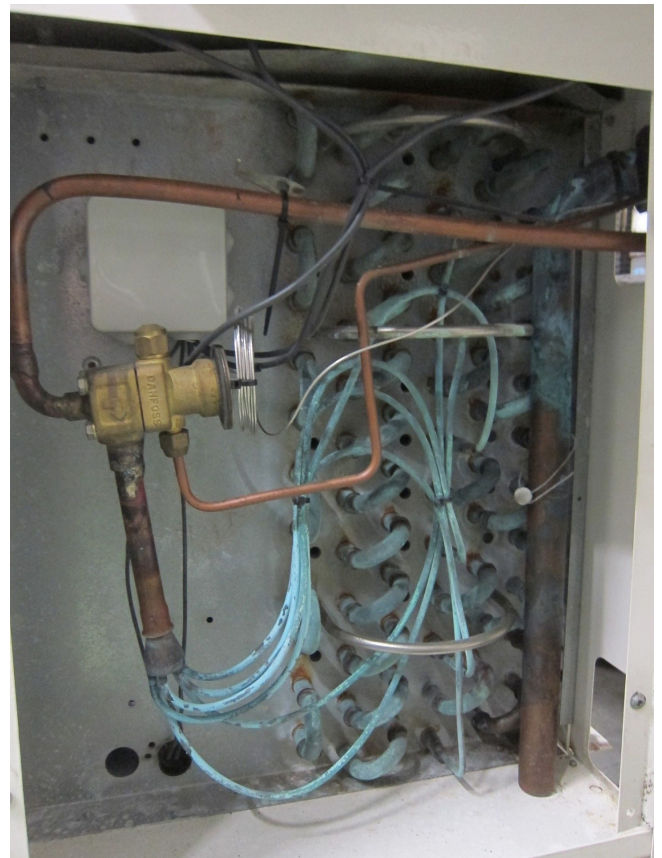
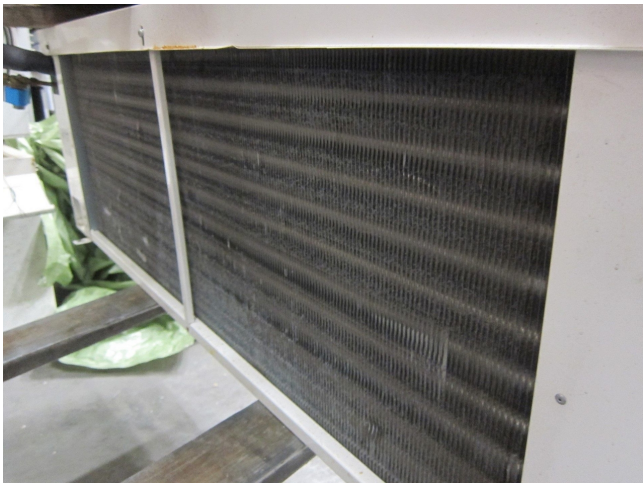
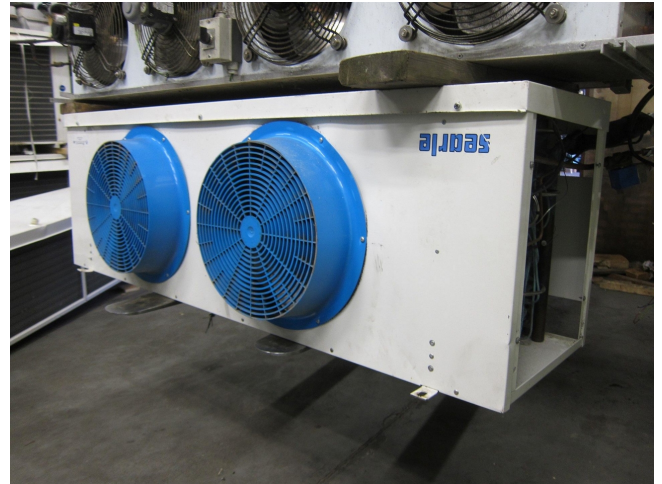
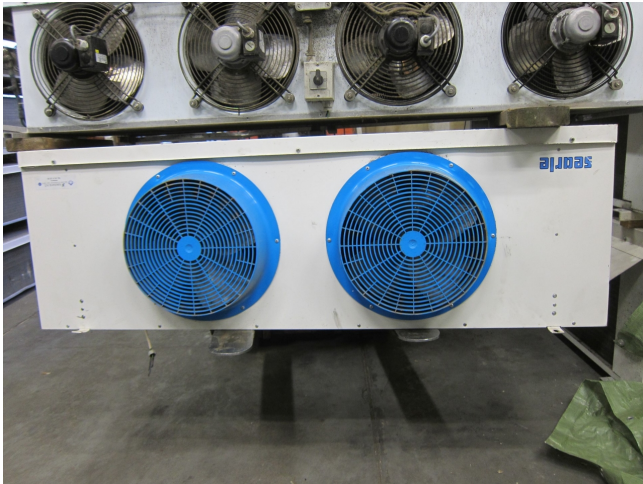
Brand	Searle
Type	KM95-6 E
kW	12,5
Refrigerant	Freon
Number of Fans	2
Fin Space in mm	6
Defrosting	Electric
m <sup>3</sup> /h	7020
Sizes	1700x700x570 mm (LxWxH)
Remarks	Fan: - kW / - RPM / Ø = 350 mm
Stock	1




## Description

### Used Searle KM95-6 E

Fan: - kW / - RPM / Ø = 350 mm / 7020 m<sup>3</sup>/h



Model		KM95-6			Serial Number		203708		
Medium		HCFCs & HFCs			Date Code		BN		
Max Pressure		300	PSIG	21	Bar				
FAN MOTORS					TOTAL AMP/PHASE				
No. Off	Volts	Phase	Watts	Hz	1	2	3		
2	380	3	200	50	1.34	1.34	1.34		
	415				1.48	1.48	1.48		
DEFROST					TOTAL AMP/PHASE				
Volts	Phase	Watts			1	2	3		
380	3	3980			6.0	6.0	6.0		
415		4750			6.5	6.5	6.5		
<b>searle</b>				MADE IN THE E.C.					
Telephone : + 44 (0)1329 823344									